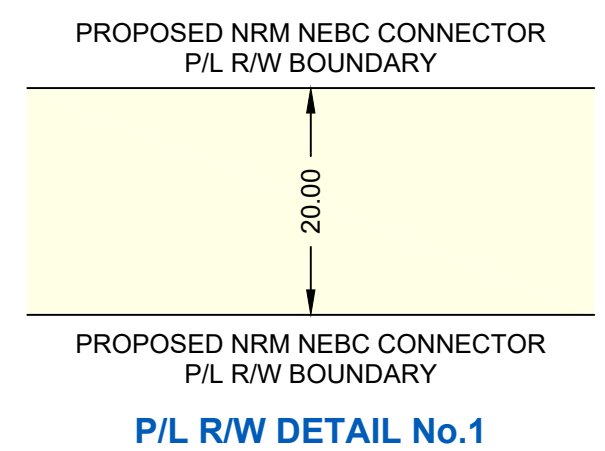
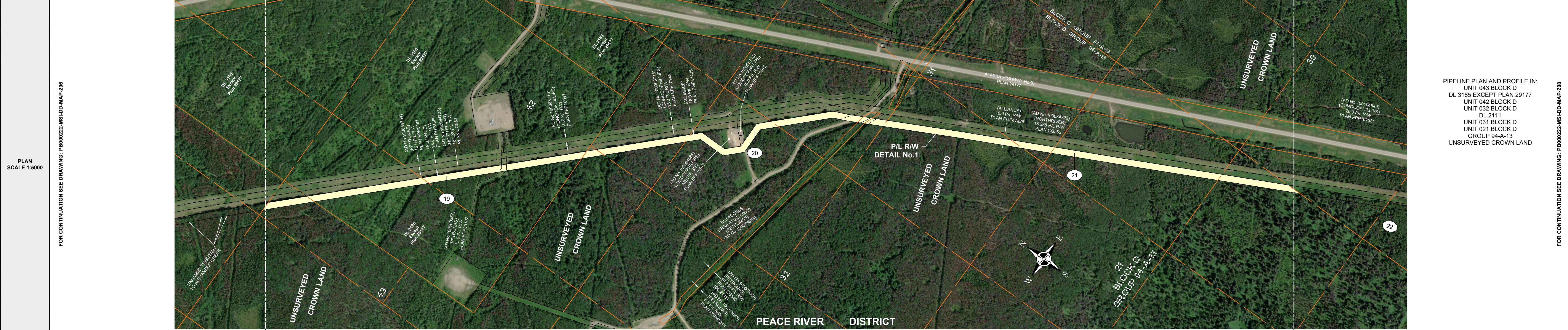


R/W DETAILS
N.T.S.



OWNERSHIP TRACT No.		NRCP-0065	NRCP-0066	NRCP-0067	NRCP-0068	NRCP-0069	NRCP-0070	NRCP-0070-DL	NRCP-0070	NRCP-0071	NRCP-0072	NRCP-0073	NRCP-0074
AREA (ha) AND LENGTH (m) OF PERMANENT EASEMENT		AREA 0.279 LENGTH 139.5	AREA 1.695 LENGTH 847.6	AREA 0.100 LENGTH 49.8	AREA 0.544 LENGTH 272.0	AREA 0.639 LENGTH 319.5	AREA 0.530 LENGTH 265.0	AREA 0.051 LENGTH 25.6	AREA 0.104 LENGTH 52.0	AREA 0.816 LENGTH 407.8	AREA 0.222 LENGTH 111.2	AREA 1.036 LENGTH 518.1	AREA 0.458 LENGTH 229.2

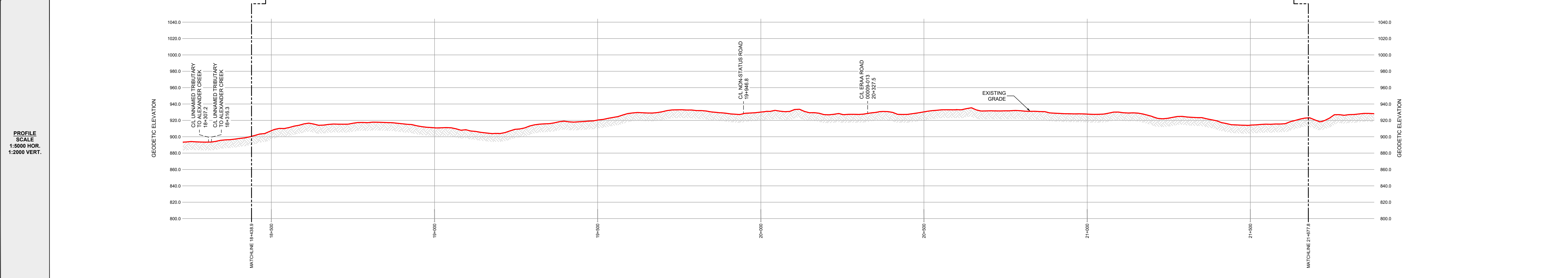


FOR CONTINUATION SEE DRAWING: PB000222-MSI-DD-MAP-206

PLAN SCALE 1:5000

PIPELINE PLAN AND PROFILE IN:
UNIT 043 BLOCK D
DL 3185 EXCEPT PLAN 29177
UNIT 042 BLOCK D
UNIT 032 BLOCK D
DL 2111
UNIT 031 BLOCK D
UNIT 021 BLOCK D
GROUP 94-A-13
UNSURVEYED CROWN LAND

FOR CONTINUATION SEE DRAWING: PB000222-MSI-DD-MAP-206



PROFILE SCALE
1:5000 HOR.
1:2000 VERT.

GENERAL NOTES:

- ALL CHAINAGES AND DIMENSIONS ARE IN METRES UNLESS NOTED OTHERWISE.
- PROFILE INFORMATION HAS BEEN OBTAINED FROM LIDAR AND FIELD SURVEY.
- CHAINAGES SHOWN ARE CONTOUR.
- THIS DOCUMENT IS NOT A PLAN OF SURVEY, BUT IS A GRAPHICAL REPRESENTATION OF THE APPROXIMATE SIZE, CONFIGURATION AND LOCATION OF PROPERTY OWNERSHIP. IT IS NOT INTENDED TO BE USED FOR LEGAL DESCRIPTIONS, CALCULATING EXACT DIMENSIONS OR PROPERTY AREAS.
- CONVERSION FACTOR FOR HECTARES TO ACRES IS: 1 HECTARE = 2.4710 ACRES.
- TYPICALLY THE RIGHT OF WAY WIDTH IS 20.0m BUT WILL VARY AT SPECIFIC LOCATIONS DUE TO ENGINEERING AND CONSTRUCTION RESTRICTIONS.
- FULL SIZE DRAWINGS ARE PLOTTED ON 707 x 1000 (B1 SIZED PAPER). REDUCED SIZE DRAWINGS ARE NOT TO SCALE.

LEGEND:

KILOMETRE POST:

PROPOSED PIPELINE RIGHT OF WAY:

PROPOSED VALVE SITE:

PROPERTY LINE:

A/R: ACCESS ROAD
ha.: HECTARES
m: METRES
NPS: NOMINAL PIPE SIZE
P/L: PIPELINE
R/W: RIGHT OF WAY
C/L: CENTRE LINE

CER APPROVAL:

LAND TITLES OFFICE:

PLAN No. _____

ENTERED AND REGISTERED

ON _____

INSTRUMENT No: _____

A.D.REGISTRAR

REVISIONS:

NO.	DESCRIPTION	DATE	DRFT	CHK	APRV
00	PLAN ISSUED	NOV. 18, 2024	JA	TM	JH

PLAN SHOWING:

Plan and Profile of NEBC Connector
from
KP 18+438.9 to 21+677.8
Limits of Sheet
NE Unit 43 Block D Group 94-A-13
SE Unit 21 Block D Group 94-A-13
Peace River District - British Columbia

MIDWEST SURVEYS LAND SURVEYING LTD. 10915 ALASKA ROAD FORT ST. JOHN, BC, V1J 6P3 TEL: 250-795-3902	Project Name: NEBC Connector Project No.: C-00364 Route Reference: PB000222-MSI-GS-SPD-002_18 Document No.: PB000222-MSI-DD-MAP-207_00	Sheet No.: 6.0 00 REVISION
--	---	---