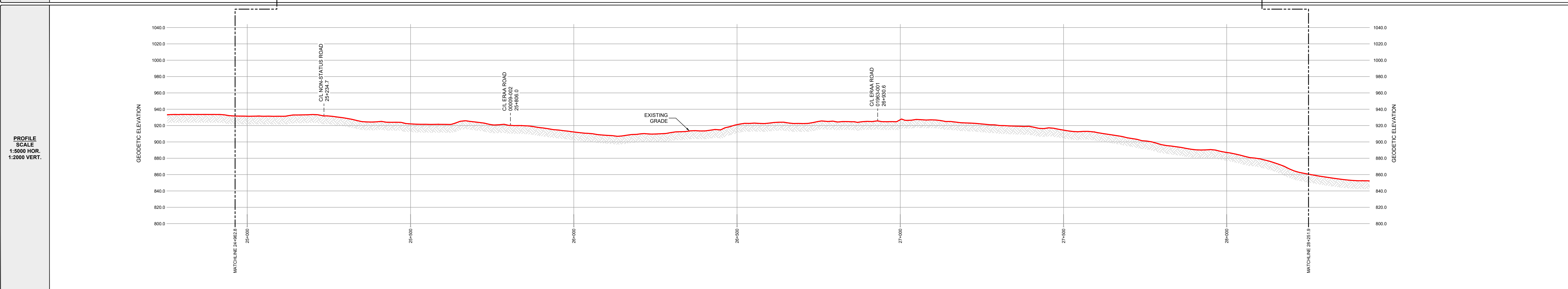


R/W DETAILS
N.T.S.



OWNERSHIP TRACT No.		NRCP-0084	NRCP-0085	NRCP-0086	NRCP-0087	NRCP-0088	NRCP-0089	NRCP-0090	NRCP-0091	NRCP-0092	NRCP-0093	
AREA (ha) AND LENGTH (m) OF PERMANENT EASEMENT		AREA 0.271 LENGTH 135.5	AREA 0.686 LENGTH 343.2	AREA 0.948 LENGTH 473.9	AREA 0.963 LENGTH 481.3	AREA 0.454 LENGTH 227.2	AREA 0.481 LENGTH 240.4	AREA 0.911 LENGTH 455.5	AREA 0.281 LENGTH 140.5	AREA 0.654 LENGTH 327.0	AREA 0.924 LENGTH 462.2	



GENERAL NOTES:

- ALL CHAINAGES AND DIMENSIONS ARE IN METRES UNLESS NOTED OTHERWISE.
- PROFILE INFORMATION HAS BEEN OBTAINED FROM LIDAR AND FIELD SURVEY.
- CHAINAGES SHOWN ARE CONTOUR.
- THIS DOCUMENT IS NOT A PLAN OF SURVEY, BUT IS A GRAPHICAL REPRESENTATION OF THE APPROXIMATE SIZE, CONFIGURATION AND LOCATION OF PROPERTY OWNERSHIP. IT IS NOT INTENDED TO BE USED FOR LEGAL DESCRIPTIONS, CALCULATING EXACT DIMENSIONS OR PROPERTY AREAS.
- CONVERSION FACTOR FOR HECTARES TO ACRES IS: 1 HECTARE = 2.4710 ACRES.
- TYPICALLY THE RIGHT OF WAY WIDTH IS 20.0m BUT WILL VARY AT SPECIFIC LOCATIONS DUE TO ENGINEERING AND CONSTRUCTION RESTRICTIONS.
- FULL SIZE DRAWINGS ARE PLOTTED ON 707 x 1000 (B1 SIZED PAPER). REDUCED SIZE DRAWINGS ARE NOT TO SCALE.

LEGEND:

KILOMETRE POST:

PROPOSED PIPELINE RIGHT OF WAY:

PROPOSED VALVE SITE:

PROPERTY LINE:

A/R: ACCESS ROAD
ha.: HECTARES
m: METRES
NPS: NOMINAL PIPE SIZE
P/L: PIPELINE
R/W: RIGHT OF WAY
C/L: CENTRE LINE

CER APPROVAL:

LAND TITLES OFFICE:

PLAN No. _____
ENTERED AND REGISTERED
ON _____
INSTRUMENT No: _____
A.D. REGISTRAR

REVISIONS:

NO.	DESCRIPTION	DATE	DRFT	CHK	APRV
00	PLAN ISSUED	NOV. 18, 2024	JA	TM	JH

PLAN SHOWING:
Plan and Profile of NEBC Connector
from
KP 24+962.8 to 28+251.9
Limits of Sheet
NW Unit 89 Block K Group 94-A-12
NE Unit 67 Block K Group 94-A-12
Peace River District - British Columbia

MIDWEST SURVEYS
LAND SURVEYING LTD.
10515 ALASKA ROAD
FORT ST. JOHN, BC, V1J 6P3
TEL: 250-795-3902

Project Name: NEBC Connector
Project No.: C-00364
Route Reference: PB000222-MSI-GS-SPD-002_18
Document No.: PB000222-MSI-DD-MAP-209_00

Sheet No.: 8.0
00
REVISION