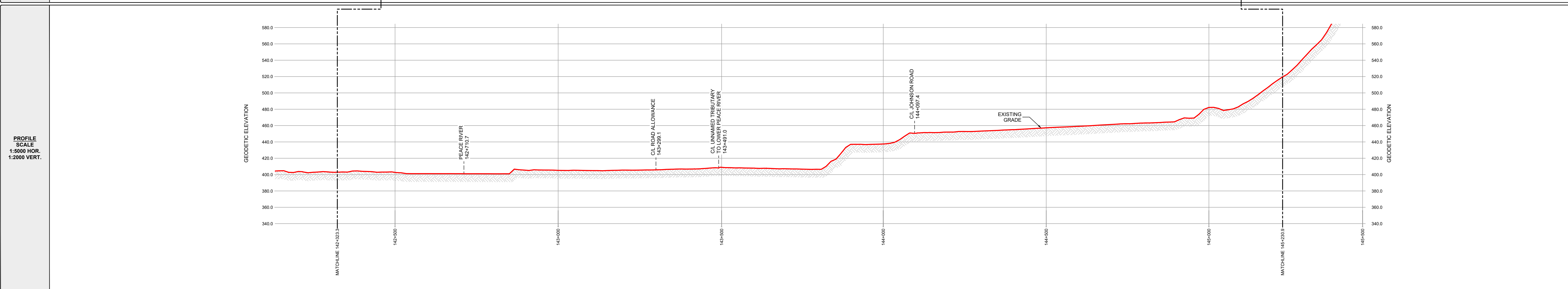


R/W DETAILS
N.T.S.



| OWNERSHIP TRACT No. | NRCP-0285 | NRCP-0287 | ROAD NRCP-0287.1 | NRCP-0290 | NRCP-0291 | ROAD NRCP-0291 | NRCP-0292 | NRCP-0293 |
|--|----------------------------------|----------------------------------|--|----------------------------------|----------------------------------|---|----------------------------------|----------------------------------|
| AREA (ha) AND LENGTH (m) OF PERMANENT EASEMENT | AREA 1.034 LENGTH 518.3 | AREA 0.894 LENGTH 446.0 | LENGTH 28.6 AREA 0.280 LENGTH 139.8 | AREA 0.954 LENGTH 476.9 | AREA 0.286 LENGTH 142.8 | LENGTH 26.1 AREA 0.079 LENGTH 40.0 | AREA 0.477 LENGTH 238.7 | AREA 1.669 LENGTH 834.6 |



GENERAL NOTES:

- ALL CHAINAGES AND DIMENSIONS ARE IN METRES UNLESS NOTED OTHERWISE.
- PROFILE INFORMATION HAS BEEN OBTAINED FROM LIDAR AND FIELD SURVEY.
- CHAINAGES SHOWN ARE CONTOUR.
- THIS DOCUMENT IS NOT A PLAN OF SURVEY, BUT IS A GRAPHICAL REPRESENTATION OF THE APPROXIMATE SIZE, CONFIGURATION AND LOCATION OF PROPERTY OWNERSHIP. IT IS NOT INTENDED TO BE USED FOR LEGAL DESCRIPTIONS, CALCULATING EXACT DIMENSIONS OR PROPERTY AREAS.
- CONVERSION FACTOR FOR HECTARES TO ACRES IS: 1 HECTARE = 2.4710 ACRES.
- TYPICALLY THE RIGHT OF WAY WIDTH IS 20.0m BUT WILL VARY AT SPECIFIC LOCATIONS DUE TO ENGINEERING AND CONSTRUCTION RESTRICTIONS.
- FULL SIZE DRAWINGS ARE PLOTTED ON 707 x 1000 (B1 SIZED PAPER). REDUCED SIZE DRAWINGS ARE NOT TO SCALE.

LEGEND:

KILOMETRE POST:

PROPOSED PIPELINE RIGHT OF WAY:

PROPOSED VALVE SITE:

PROPERTY LINE:

A/R: ACCESS ROAD
ha.: HECTARES
m: METRES
NPS: NOMINAL PIPE SIZE
P/L: PIPELINE
R/W: RIGHT OF WAY
C/L: CENTRE LINE

CER APPROVAL:

LAND TITLES OFFICE:

PLAN No. _____

ENTERED AND REGISTERED

ON _____

INSTRUMENT No: _____

A.D.REGISTRAR

REVISIONS:

| NO. | DESCRIPTION | DATE | DRFT | CHK | APRV |
|-----|-------------|---------------|------|-----|------|
| 00 | PLAN ISSUED | NOV. 18, 2024 | JA | TM | JH |

**NORTH RIVER
MIDSTREAM**

PLAN SHOWING:
Plan and Profile of NEBC Connector
from
KP 142+323.3 to 145+230.9
Limits of Sheet
NE 1/4 Sec 20 Tp 82 R 17 W6M
NW 1/4 Sec 16 Tp 82 R 17 W6M
Peace River District - British Columbia

| | | |
|--|---|--|
| MIDWEST SURVEYS LAND SURVEYING LTD. 10915 ALASKA ROAD FORT ST. JOHN, BC, V1J 6P3 TEL: 250-795-3902 | Project Name: NEBC Connector Project No.: C-00364 Route Reference: PB000222-MSI-GS-SPD-002_18 Document No.: PB000222-MSI-DD-MAP-243_00 | Sheet No.: 42.0 00 REVISION |
|--|---|--|