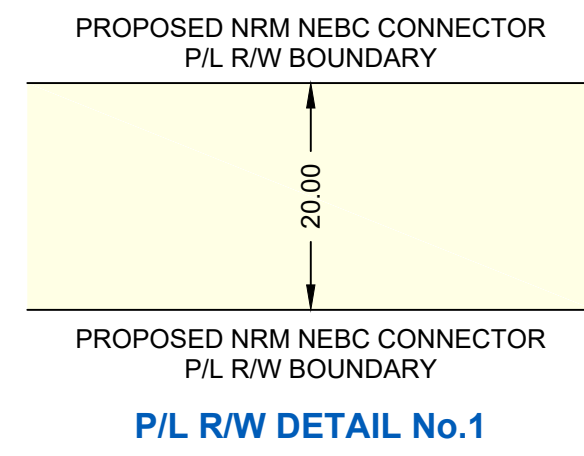


R/W DETAILS
N.T.S.



OWNERSHIP TRACT No.	ROAD	NRCP-0303	NRCP-0304	NRCP-0305	NRCP-0306
AREA (ha) AND LENGTH (m) OF PERMANENT EASEMENT	LENGTH	AREA 1.949 LENGTH 974.3	AREA 1.956 LENGTH 978.4	AREA 0.508 LENGTH 254.0	AREA 1.959 LENGTH 979.7

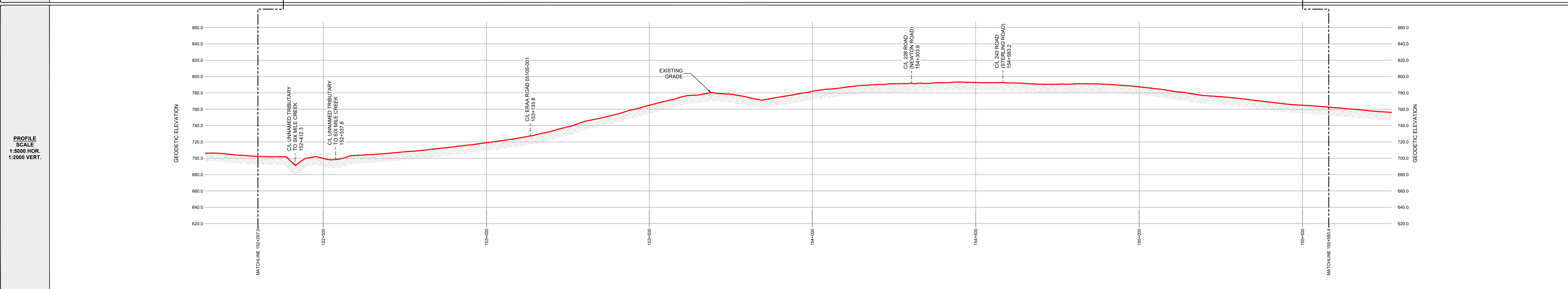


FOR CONTINUATION SEE DRAWING: PB000222-MSI-DD-MAP-245

PLAN SCALE 1:5000

PIPELINE PLAN AND PROFILE IN:
Parcel A (N23694) of the W 1/2 Sec 27
SE 1/4 Sec 27
NE 1/4 Sec 22
NW 1/4 Sec 23
Tp 81 R 17 W6M

FOR CONTINUATION SEE DRAWING: PB000222-MSI-DD-MAP-247



GENERAL NOTES:

- ALL CHAINAGES AND DIMENSIONS ARE IN METRES UNLESS NOTED OTHERWISE.
- PROFILE INFORMATION HAS BEEN OBTAINED FROM LIDAR AND FIELD SURVEY.
- CHAINAGES SHOWN ARE CONTOUR.
- THIS DOCUMENT IS NOT A PLAN OF SURVEY, BUT IS A GRAPHICAL REPRESENTATION OF THE APPROXIMATE SIZE, CONFIGURATION AND LOCATION OF PROPERTY OWNERSHIP. IT IS NOT INTENDED TO BE USED FOR LEGAL DESCRIPTIONS, CALCULATING EXACT DIMENSIONS OR PROPERTY AREAS.
- CONVERSION FACTOR FOR HECTARES TO ACRES IS: 1 HECTARE = 2.4710 ACRES.
- TYPICALLY THE RIGHT OF WAY WIDTH IS 20.0m BUT WILL VARY AT SPECIFIC LOCATIONS DUE TO ENGINEERING AND CONSTRUCTION RESTRICTIONS.
- FULL SIZE DRAWINGS ARE PLOTTED ON 707 x 1000 (B1 SIZED PAPER). REDUCED SIZE DRAWINGS ARE NOT TO SCALE.

LEGEND:

KILOMETRE POST:

PROPOSED PIPELINE RIGHT OF WAY:

PROPOSED VALVE SITE:

PROPERTY LINE:

A/R: ACCESS ROAD
ha.: HECTARES
m: METRES
NPS: NOMINAL PIPE SIZE
P/L: PIPELINE
R/W: RIGHT OF WAY
C/L: CENTRE LINE

CER APPROVAL:

LAND TITLES OFFICE:

PLAN No. _____
ENTERED AND REGISTERED
ON _____
INSTRUMENT No: _____
A.D.REGISTRAR

REVISIONS:

NO.	DESCRIPTION	DATE	DRFT	CHK	APRV
00	PLAN ISSUED	NOV. 18, 2024	JA	JH	JH

**NORTH RIVER
MIDSTREAM**

PLAN SHOWING:
Plan and Profile of NEBC Connector
from
KP 152+297.0 to 155+580.4
Limits of Sheet
NW 1/4 Sec 27 Tp 81 R 17 W6M
NW 1/4 Sec 23 Tp 81 R 17 W6M
Peace River District - British Columbia

MIDWEST SURVEYS LAND SURVEYING LTD. 10915 ALASKA ROAD FORT ST. JOHN, BC, V1J 6P3 TEL: 250-795-3902	Project Name: NEBC Connector Project No.: C-00364 Route Reference: PB000222-MSI-GS-SPD-002_18 Document No.: PB000222-MSI-DD-MAP-246_00	Sheet No.: 45.0 REVISION 00
--	---	--