



NorthRiver Midstream NEBC Connector GP Inc.

**NEBC Connector Project
Notice of Proposed Detailed Route
Pursuant to paragraph 201(1)(b) of the *Canadian Energy Regulator
Act***

IN THE MATTER OF the *Canadian Energy Regulator Act* (CER Act) and the regulations made thereunder;

IN THE MATTER OF Certificate of Public Convenience and Necessity OC-067 (Certificate) approving the construction and operation of a natural gas pipeline, condensate pipeline and related facilities known as the NEBC Connector Project extending approximately 215 kilometers (km) in length, with various pipe sizes ranging from 8 to 12 inches in diameter from NorthRiver Midstream NEBC Connector GP Inc.'s (NorthRiver) existing Highway Hub, approximately 25 km northwest of Wonowon, British Columbia (BC), to the Gordondale area of Alberta, about 19 km east of the BC/Alberta border.

NorthRiver has received approval from the Commission of the Canada Energy Regulator pursuant to the Certificate to construct and operate the NEBC Connector Project.

NorthRiver proposes that the detailed route for the NEBC Connector Project is as shown on the map in this notice. This notice is being published to comply with the requirements of paragraph 201(1)(b) of the CER Act. The pipeline route is proposed to cross those lands noted in the accompanying tables.

If you anticipate that your land may be adversely affected by the detailed route of the NEBC Connector Project, you may oppose the proposed detailed route by filing a written statement of opposition with the Canada Energy Regulator (CER) within 30 days following the publication of this notice. The **Statement of Opposition to the Detailed Route** form can be found on the CER's website at www.cer-rec.gc.ca/statement-opposition. Any such statement must set out both the nature of your interest in the lands and the grounds for your opposition to the detailed route.

A copy of any such written statement of opposition must be sent to the following addresses:

Canada Energy Regulator
Suite 210, 517 Tenth Avenue SW
Calgary, Alberta T2R 0A8
Attention: Secretary of the
Commission
Toll Free Phone: 1-800-899-1265
Email: secretary@cer-rec.gc.ca

**NorthRiver Midstream
NEBC Connector GP Inc.**
Suite 1400, 888 - 3rd Street SW
Calgary, Alberta T2P 5C5
Attention: Rod Locke Phone:
250-261-1121
Email: lands@nrm.ca and/or
regulatory@nrm.ca

Where a written statement is filed with the CER within the 30 days of being served this notice, the Commission shall forthwith order, subject to certain exceptions as noted below, that a public hearing be held in a region it considers convenient for the person(s) who filed a written statement.

The Commission may at any time disregard any such written statement and is not required to take any action with regard to that statement if the person who filed the statement files a notice of withdrawal, or it appears to the Commission that the statement is frivolous, vexatious or is not made in good faith

If the Commission determines to hold a public hearing, it will fix a suitable time and place for the hearing, and will publish a notice of the hearing in at least one issue of a publication, if any, in general circulation within the area in which the lands proposed to be acquired are situated. The Commission will also send such notice to each person who files a written statement of opposition with the CER.

The Commission or a person authorized by the Commission may make such inspection of the lands proposed to be acquired for or affected by the construction of the NEBC Connector Project as the Commission deems necessary.

At the public hearing, the Commission will permit each person who filed a written statement to make representations and may allow any other interested person to make representations before it as the Commission deems proper.

The Commission will take into account all written statements and all representations made at the hearing to determine the best possible

detailed route of the NEBC Connector Project and the most appropriate methods and timing of constructing the NEBC Connector Project. The Commission may impose in any approval such conditions as it considers proper.

Where the Commission has held a public hearing in respect of any section or part of the NEBC Connector Project and approved or refused to approve the Plan, Profile and Book of Reference respecting that section or part, it will forward a copy of its decision and reasons to each person who made representations to the Commission at the hearing.

The Commission may fix such amount as it deems reasonable in respect of the interim or final costs incurred by any person who makes representations to the Commission at such a public hearing and the amount so fixed will be paid forthwith to the person by NorthRiver.

A copy of the plan, profile and book of reference for the detailed route of the NEBC Connector Project is available for inspection online at <https://www.nrm.ca/what-we-do/nebc-connector/> or at the following

addresses:

Canada Energy Regulator
Suite 210, 517 - Tenth Avenue SW
Calgary, Alberta T2R 0A8
Toll Free Phone: 1-800-899-1265
Website: www.cer-rec.gc.ca

**NorthRiver Midstream Inc.
(Calgary Office)**
Suite 1400, 888 - 3rd Street SW
Calgary Alberta T2P 5C5
Phone: 587-747-6500

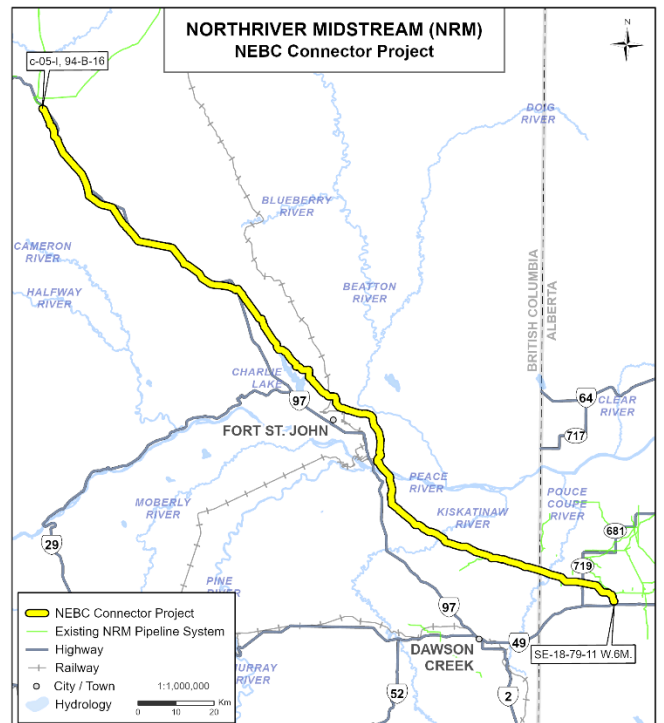
**NorthRiver Midstream Inc.
(Charlie Lake Office)**
Mile 53 Alaska Hwy
Fort St. John, BC V1J 4H7

City of Fort St. John
10631 - 100th Street
Fort St. John, BC V1J 3Z5
Phone: 250-787-8150

City of Dawson Creek
10105 12A Street
Dawson Creek, BC V1G 3V7
Phone: 250-784-3600

Peace River Regional District
9505 - 100th Street
Fort St. John, BC V1J 4N4
Phone: 250-785-8084

Peace River Regional District
1981 Alaska Avenue
Dawson Creek, BC V1J 4H8
Phone: 250-784-3200



Please contact Rod Locke, Manager, Land & ROW, NorthRiver Midstream NEBC Connector GP Inc. at 250-261-1121 or the Canada Energy Regulator offices at 1-800-899-1265 should you have any questions concerning this notice; the plans, profiles and book of reference; or the detailed route procedures.

Dated at Calgary, Alberta this 18 day of February 2025.

NorthRiver Midstream NEBC Connector GP Inc.



BRITISH COLUMBIA				
Land Description	Land Description	Land Description	Land Description	Land Description
c-005-I/094-B-16	d-021-D/094-A-13	NW 11-88-23-W6M	SW 18-85-19-W6M	NW 21-82-17-W6M
d-005-I/094-B-16	a-021-D/094-A-13	NE 11-88-23-W6M	NW 07-85-19-W6M	SW 21-82-17-W6M
c-004-I/094-B-16	b-030-C/094-A-13	W 12-88-23-W6M	W 08-85-19-W6M	S 21-82-17-W6M
a-005-I/094-B-16	c-020-C/094-A-13	NE 12-88-23-W6M	NE 07-85-19-W6M	SW 21-82-17-W6M
b-004-I/094-B-16	b-020-C/094-A-13	NW 07-88-22-W6M	NE 08-85-19-W6M	SW 21-82-17-W6M
c-094-H/094-B-16	a-020-C/094-A-13	SW 07-88-22-W6M	NW 09-85-19-W6M	NW 16-82-17-W6M
d-094-H/094-B-16	d-010-C/094-A-13	SE 07-88-22-W6M	NW 04-85-19-W6M	S 16-82-17-W6M
a-094-H/094-B-16	a-010-C/094-A-13	NE 06-88-22-W6M	NE 09-85-19-W6M	N 09-82-17-W6M
d-084-H/094-B-16	b-009-C/094-A-13	NW 05-88-22-W6M	SW 04-85-19-W6M	N 10-082-17 W6M
c-083-H/094-B-16	c-099-K/094-A-12	SW 05-88-22-W6	SE 9-85-19-W6M	SE 10-82-17-W6M
b-083-H/094-B-16	b-099-K/094-A-12	SE 05-88-22-W6M	SE 04-85-19-W6M	SE 09-82-17-W6M
a-083-H/094-B-16	c-089-K/094-A-12	NE 32-87-22-W6M	NE 04-85-19-W6M	NE 04-82-17-W6M
c-073-H/094-B-16	d-089-K/094-A-12	SW 33-87-22-W6M	SW 03-85-19-W6M	NW 04-82-17-W6M
d-073-H/094-B-16	a-089-K/094-A-12	SE 33-87-22-W6M	NW 34-84-19-W6M	SW 04-82-17-W6M
a-073-H/094-B-16	d-079-K/094-A-12	NE 28-87-22-W6M	SW 34-84-19-W6M	NE 33-81-17-W6M
b-072-H/094-B-16	c-078-K/094-A-12	NW 27-87-22-W6M	SE 34-84-19-W6M	NW 33-81-17-W6M
c-062-H/094-B-16	b-078-K/094-A-12	NE 27-87-22-W6M	NE 27-84-19-W6M	SE 33-81-17-W6M
b-062-H/094-B-16	a-078-K/094-A-12	SE 27-87-22-W6M	NW 26-84-19-W6M	NE 28-81-17-W6M
a-062-H/094-B-16	b-077-K/094-A-12	SW 26-87-22-W6M	SW 26-84-19-W6M	W 27-81-17-W6M
d-052-H/094-B-16	c-067-K/094-A-12	NW 23-87-22-W6M	SE 26-84-19-W6M	SE 27-81-17-W6M
c-051-H/094-B-16	d-067-K/094-A-12	NE 23-87-22-W6M	NE 23-84-19-W6M	NE 22-81-17-W6M
b-051-H/094-B-16	c-066-K/094-A-12	SE 23-87-22-W6M	NW 24-84-19-W6M	NW 23-81-17-W6M
c-041-H/094-B-16	a-067-K/094-A-12	SW 24-87-22-W6M	PT NW 24-84-19-W6M	S 23-81-17-W6M
d-041-H/094-B-16	b-066-K/094-A-12	NW 13-87-22-W6M	NE 24-84-19-W6M	SW 24-81-17-W6M
d-041-H/094-B-16	a-066-K/094-A-12	NE 13-87-22-W6M	NW 19-84-18-W6M	NW 13-81-17-W6M
a-041-H/094-B-16	d-056-K/094-A-12	SE 13-87-22-W6M	SW 19-84-18-W6M	E 13-81-17-W6M
a-041-H/094-B-16	c-055-K/094-A-12	SW 18-87-21-W6M	SE 19-84-18-W6M	S 18-81-16-W6M
d-031-H/094-B-16	d-055-K/094-A-12	SE 18-87-21-W6M	NE 18-84-18-W6M	SE 07-81-16-W6M
d-031-H/094-B-16	c-054-K/094-A-12	SW 17-87-21-W6M	SE 18-84-18-W6M	NW 08-81-16-W6M
a-031-H/094-B-16	b-054-K/094-A-12	SE 17-87-21-W6M	SW 17-84-18-W6M	NE 08-81-16-W6M
b-040-E/094-A-13	a-054-K/094-A-12	SW 16-87-21-W6M	NW 08-84-18-W6M	SE 08-81-16-W6M
c-030-E/094-A-13	b-053-K/094-A-12	SE 16-87-21-W6M	NE 08-84-18-W6M	S 09-81-16-W6M
d-030-E/094-A-13	a-053-K/094-A-12	BL A 15-87-21-W6M	NW 09-84-18-W6M	NE 04-81-16-W6M
a-030-E/094-A-13	b-052-K/094-A-12	FR 10-87-21-W6M	L 1 09-084-18-W6M	S 03-81-16-W6M
b-029-E/094-A-13	a-052-K/094-A-12	DL 2004	SW 09-84-18-W6M	SW 02-81-16 W6M
d-020-E/094-A-13	d-042-K/094-A-12	NW 11-87-21-W6M	SE 09-84-18-W6M	NW 35-80-16-W6M
c-019-E/094-A-13	c-041-K/094-A-12	NW 11-87-21-W6M	SW 10-84-18-W6M	E 35-80-16-W6M
b-019-E/094-A-13	d-041-K/094-A-12	NE 11-87-21-W6M	SW 10-84-18-W6M	SW 36-80-16-W6M
a-019-E/094-A-13	a-041-K/094-A-12	NE 11-87-21-W6M	SE 10-84-18-W6M	SE 36-80-16-W6M
d-009-E/094-A-13	b-050-J/094-A-12	SE-11-87-21-W6M	SW 11-84-18-W6M	SW 31-80-15-W6M
a-009-E/094-A-13	c-040-J/094-A-12	SE 11-87-21-W6M	NW 02-84-18-W6M	NW 30-80-15-W6M
b-008-E/094-A-13	d-040-J/094-A-12	SW 12-87-21-W6M	NE-02-84-18-W6M	NE 30-80-15-W6M
c-098-D/094-A-13	a-040-J/094-A-12	S 01-87-21-W6M	NW 01-84-18-W6M	NW 29-80-15-W6M
d-098-D/094-A-13	b-039-J/094-A-12	NE 35-86-21 W6M	NE 01-84-18-W6M	NE 29-80-15-W6M
b-098-D/094-A-13	c-029-J/094-A-12	SE 35-86-21-W6M	W 06-84-17-W6M	NW 28-80-15-W6M
a-098-D/094-A-13	d-029-J/094-A-12	SW 06-86-21-W6M	NW 31-83-17-W6M	SW 28-80-15-W6M
d-088-D/094-A-13	a-029-J/094-A-12	NW 25-86-21-W6M	NE 31-83-17-W6M	SE 28-80-15-W6M
c-087-D/094-A-13	b-028-J/094-A-12	E 25-86-21-W6M	SE 31-83-17-W6M	SW 27-80-15-W6M
d-087-D/094-A-13	c-018-J/094-A-12	SW 30-86-20-W6M	NE 30-83-17-W6M	NW 22-80-15-W6M
b-087-D/094-A-13	b-018-J/094-A-12	NW 19-86-20-W6M	NW 29-83-17-W6M	NE 22-80-15-W6M
a-087-D/094-A-13	a-018-J/094-A-12	SW 19-86-20-W6M	SW 29-83-17-W6M	NW 23-80-15-W6M
b-086-D/094-A-13	008-J/094-A-12	SE 19-86-20-W6M	NW 20-83-17-W6M	NE 23-80-15-W6M
c-076-D/094-A-13	007-J/094-A-12	SW 20-86-20-W6M	NE 20-83-17-W6M	SE 23-80-15-W6M
d-076-D/094-A-13	SE 35-88-24-W6M	NW 17-86-20-W6M	SE 20-83-17-W6M	SW 24-80-15-W6M
a-076-D/094-A-13	NE 26-88-24-W6M	SW 17-86-20-W6M	NE 17-83-17-W6M	SE 24-80-15-W6M
b-075-D/094-A-13	NW 25-88-24-W6M	NW 08-86-20-W6M	SE 17-83-17-W6M	NE 13-80-15-W6M
c-065-D/094-A-13	SW 25-88-24-W6M	NE 08-86-20-W6M	NE 08-83-17-W6M	S 19-80-14-W6M
d-065-D/094-A-13	SE 25-88-24-W6M	SE 08-86-20-W6M	SE 08-83-17-W6M	NW 18-80-14-W6M
a-065-D/094-A-13	NW 24-88-24-W6M	SW 09-86-20-W6M	L A 5&8-83-17-W6M	NE 18-80-14-W6M
b-064-D/094-A-13	NW 19-88-23-W6M	NW 04-86-20-W6M	NE 05-83-17-W6M	NW 17-80-14-W6M
c-054-D/094-A-13	SW 19-88-23-W6M	NE 04-86-20-W6M	SE 05-83-17-W6M	NE 17-80-14-W6M
d-054-D/094-A-13	SE 19-88-23-W6M	SE 04-86-20-W6M	SW 05-83-17-W6M	NW 16-80-14-W6M
a-054-D/094-A-13	NE 18-88-23-W6M	NE 33-85-20-W6M	NW 31-82-17-W6M	E 16-80-14-W6M
b-053-D/094-A-13	DL 2306	NW 34-85-20-W6M	SW 31-82-17-W6M	SW 15-80-14-W6M
a-053-D/094-A-13	NW 17-88-23-W6M	SW 34-85-20-W6M	SE 31-82-17-W6M	SE 15-80-14-W6M
d-043-D/094-A-13	SW 17-88-23-W6M	SE 34-85-20-W6M	NE 30-82-17-W6M	SW 14-80-14-W6M
DL 3185	NE 17-88-23-W6M	NE 27-85-20-W6M	NW 29-82-17-W6M	SE 14-80-14-W6M
b-042-D/094-A-13	SE 17-88-23-W6M	NW 26-85-20-W6M	SE 30-82-17-W6M	NE 11-80-14-W6M
a-042-D/094-A-13	SW 16-88-23-W6M	S 26-85-20-W6M	NW 29-82-17-W6M	NW 12-80-14-W6M
d-032-D/094-A-13	SE 16-88-23-W6M	S 25-85-20-W6M	SW 29-82-17-W6M	NE 12-80-14-W6M
c-031-D/094-A-13	SW 15-88-23-W6M	S 24-85-20-W6M	NW 20-82-17-W6M	NW 07-80-13-W6M
b-031-D/094-A-13	SE 15-88-23-W6M	NE-13-85-20-W6M	NE 20-82-17-W6M	S 07-80-13-W6M
a-031-D/094-A-13	SW 14-88-23-W6M	NW 18-85-19-W6M	N 20-82-17-W6M	SE 07-80-13-W6M
ALBERTA				
Land Description	Land Description	Land Description	Land Description	Land Description
SW 08-80-13-W6M	SE 03-80-13-W6M	SE 31-79-12-W6M	NE 27-79-12-W6M	SW 19-79-11-W6M
SW 08-80-13-W6M	SW 02-80-13-W6M	SW 32-79-12-W6M	NW 26-79-12-W6M	SE 19-79-11-W6M
SE 08-80-13-W6M	SE 02-80-13-W6M	SE 32-79-12-W6M	SW 26-79-12-W6M	NE 18-79-11-W6M
NE 05-80-13-W6M	NE 35-79-13-W6M	SW 33-79-12-W6M	SE 26-79-12-W6M	SE 18-79-11-W6M
NW 04-80-13-W6M	NW 36-79-13-W6M	SE 33-79-12-W6M	NE 23-79-12-W6M	
NE 04-80-13-W6M	SW 36-79-13-W6M	SW 34-79-12-W6M	NW 24-79-12-W6M	
NW 03-80-13-W6M	SE 36-79-13-W6M	NW 27-79-12-W6M	NE 24-79-12-W6M	
SW 03-80-13-W6M	SW 31-79-12-W6M	SE 34-79-12-W6M	NW 19-79-11-W6M	